



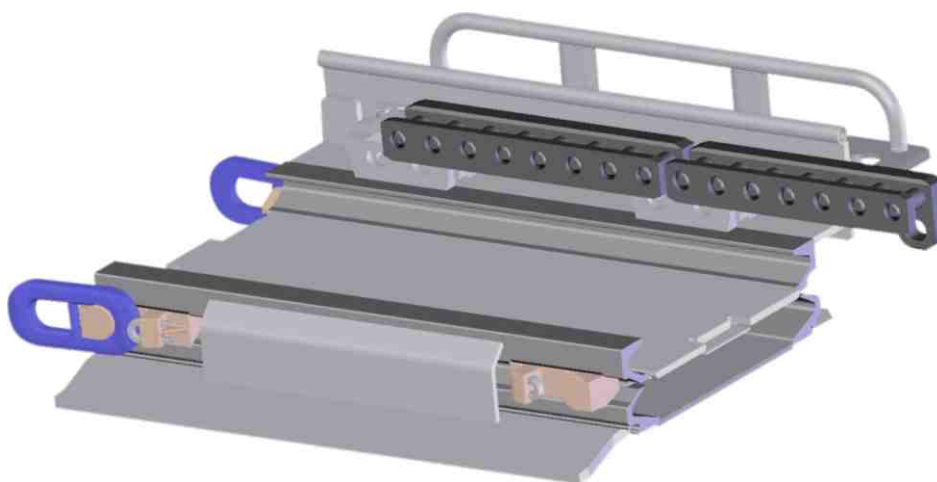
**T Machinery a.s.**

## Scraper Face Conveyor C3K 190/800

The scraper face conveyor of this construction was developed by our specialists especially for market needs. The conveyor C3K 190/800 has smallish sizes and it is destined for seams of thickness from 0,8 to 1,3 meters - height of the "E" profile is only 190 mm.

The conveyor capacity is 700 t/h in minimum. The high abrasive middle board increase the service life up to 2 mil. extracted tons. The conveyor reliability is increasing particularly by reliable trough connection with permissible loading 1 600 kN, with utilization of the special transport chain for especially hard conditions and forged scrapers.

This is the basic type which is possible to change according to our customer's needs.



### Basic technical parameters:

Transport capacity	t/h	700
Moving speed	m/s	1,1
Board middle sheet		Abrasive steel Hardox
Board middle sheet thickness	mm	25
Board lower sheet thickness	mm	15
Board trough construction		All welded with side and shearer line
Permissible loading on trough connection	kN	1600
Chain		2x26x92
Chain pitch	mm	600
Scrapers		Forged
Gearboxes		Pl., max. 4x PL15
Electric motors	kW	max. 4 x 250/85
Max. conveyor length	m	260
Service life	mil. tons	2